



# As A Service With Purpose

Anthony Nornabell

Canadian Sales Director, GreenLake Cloud Services, HPE

Alain Malboeuf

Infrastructure Sales Specialist, NOVIPRO



**NOVIPRO**



**Hewlett Packard**  
Enterprise



## SIMPLIFY OPERATIONS AND MOVE FASTER WITH A CLOUD EXPERIENCE EVERYWHERE

*“Security, data gravity, latency, application dependencies, availability, and regulatory compliance requirements for certain workloads demand non-public cloud based deployment options. In meeting these requirements, though, enterprises do not want to give up the “cloud experience.”*



# WHAT'S INCLUDED IN A "CLOUD EXPERIENCE"

## Pay for what you use

- Cost aligned with actual usage
- Metering generated invoices

## Scale Up & Down

- The ability to increase or reduce based on the needs of the business

## Agility & Speed

- Respond quickly to business demands
- Improve time to value

## Automation

- Leverage tools to provision quickly
- Less involvement in base service management of infrastructure

## Cost Optimization

- Drive cost improvements across the estate

## Visibility

- Data driven decisions about usage and efficiency

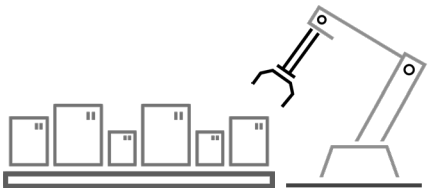
# The world is hybrid

but the true cloud experience  
has not been everywhere

70%

Multi-gen IT | Data sovereignty | Security & Compliance  
| Data costs and control | Latency, real-time decision making

Edge locations



Private data center



Colocation facilities



30%

Speed | Agility | Self-serve | Pay-per  
use

Public clouds



aws

Microsoft  
Azure

Google Cloud

# Complete your hybrid strategy with

## HPE GreenLake

Cloud that comes to you

Delivers a  
**catalogue of services**  
from HPE and  
partners



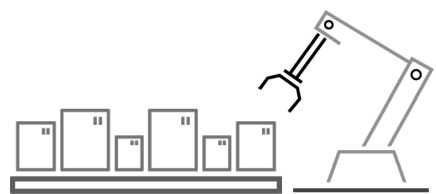
Through a secure,  
open edge to cloud  
**platform**



Modernizes IT and  
operations for your  
**apps and data**



**Edge locations**



**Private data center**



**Colocation facilities**



**Public clouds**



## Ensure the availability of your resources:

- Servers
- Personal workplaces
- Data base
- Storage
- Backups
- Network

## With remote monitoring and proactive maintenance

- Customized and flexible offer
- 7/24, receive support whenever you need
- Get the expertise you need
- Ensured that the data remains on Canadian soil

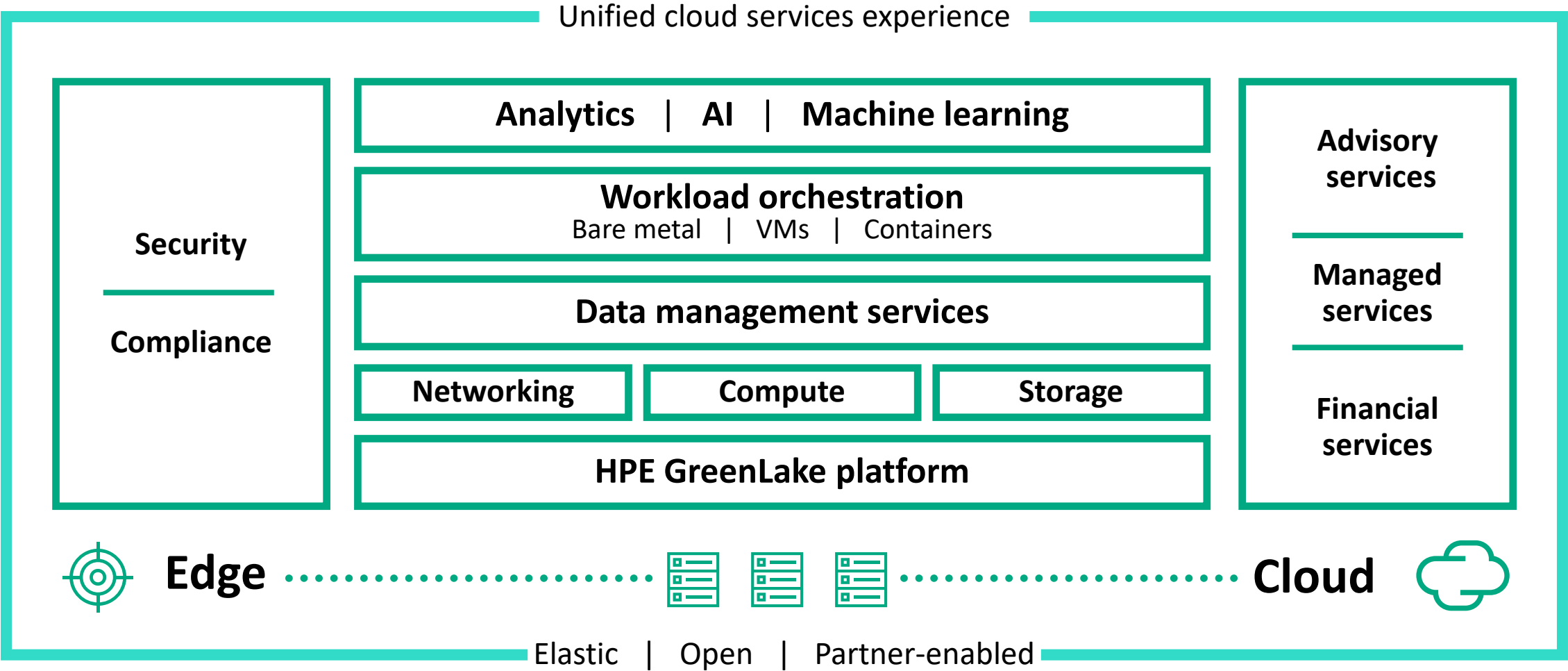
## Our Process

- Efficient and personalized solution.
- Professional teams dedicated to your infrastructure.
- Guaranteed data security.
- Stored data in Canada.
- Process under ITIL and SOC2 type 2 control

# HPE GREENLAKE

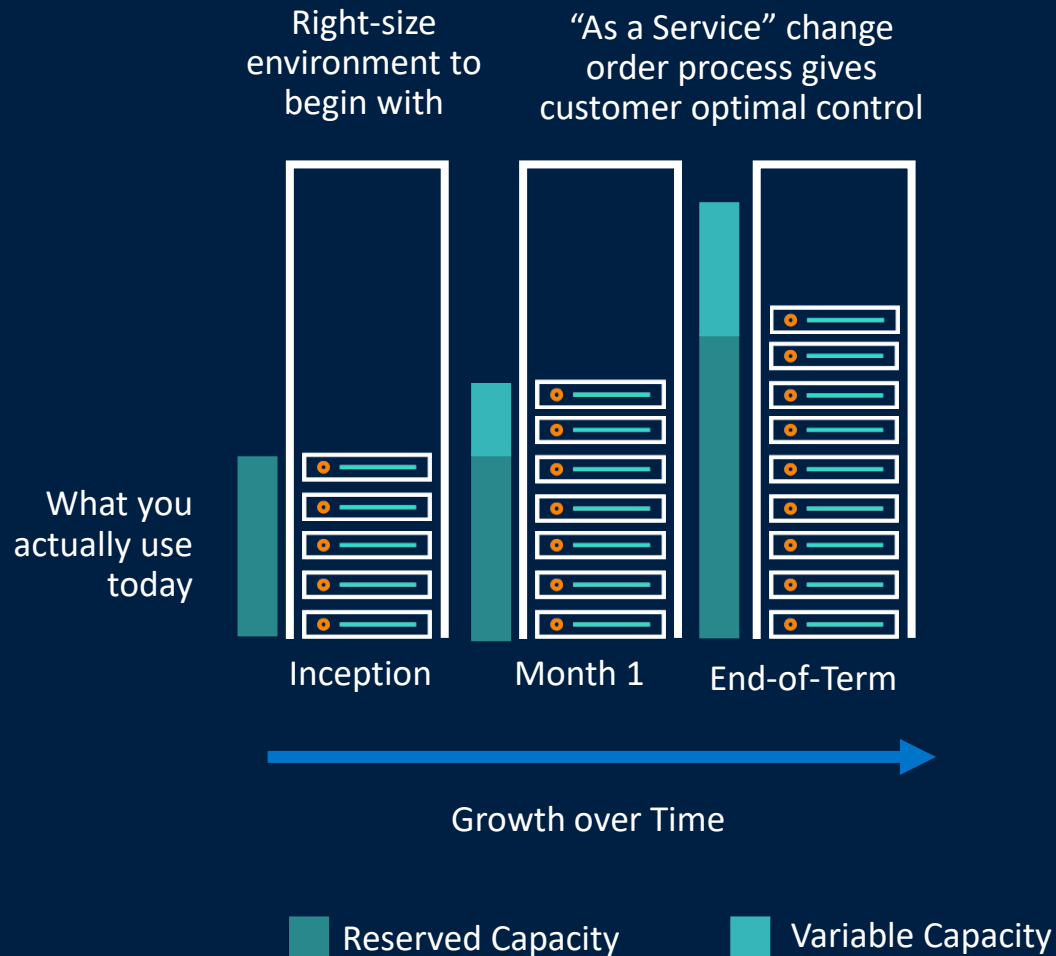
- What is it
- How does it work

The HPE GreenLake edge-to-cloud platform - uniquely meets hybrid needs





# How does it work



## Run by your team, or managed for you

Self-manage your infrastructure your way or free up resources by including managed services in your agreement.

## Grow as required to meet demand

Scale with ease by expanding as needed within the original design, or leverage the change request process to introduce additional infrastructure to your environment.

## Monitor usage and set budgets

Scale into pre-installed variable capacity while paying monthly for only what you use with advanced "unit of measure" metering, monitoring, and forecasting by HPE.

02

# HPE GREENLAKE CLOUD PLATFORM

# What you get with the platform

## Drive everything from one place

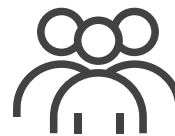
With a single unified experience on HPE GreenLake

## Gain financial agility

Make informed decisions and be empowered by self-service purchasing

## Be well protected

with built-in security at all levels and integrated data protection



**HPE GreenLake**  
Edge-to-Cloud  
Platform

## Make better decisions

driven by real-time analysis and data-powered insights

## Automate routine tasks

with integrations propelled by APIs and CLIs

## Save time & money

by preventing problems instead of fixing them

## Easy Access to complete Hybrid environments, assets and applications

- Networking
- Data Services
- Compute Ops
- InfoSight

### Featured Applications

**Aruba Central**

Network management system designed to simplify the deployment and maintenance of Aruba wired and wireless infrastructure at scale

**Get Started**

[View Networking Products](#)

**Data Services Cloud Console**

Data Services Cloud Console

**Launch**

[View Storage Products](#)

**Compute Ops Management**


Securely manage your compute infrastructure, wherever it lives.

**Get Started**

[View Compute Products](#)

**HPE GreenLake Central**

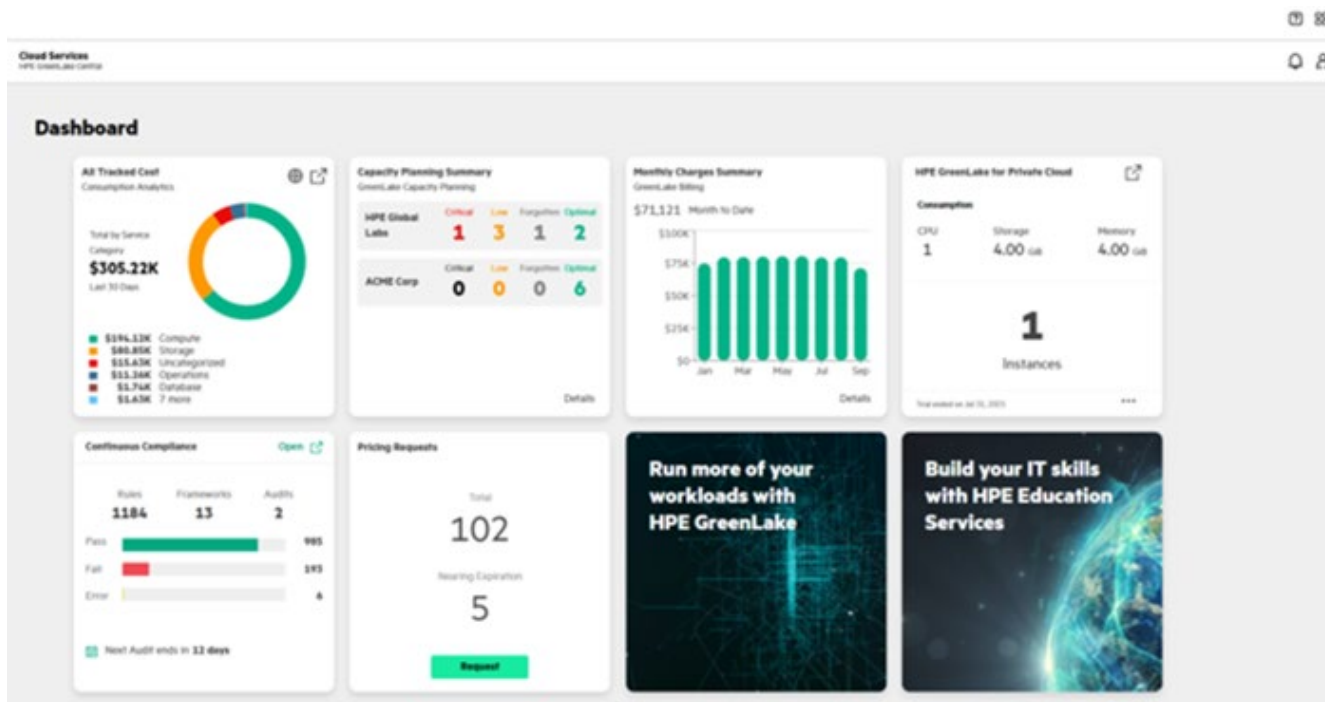
Manage your cloud services and view usage, cost, and more.

**Launch** 

[View Cloud Products](#)

# Efficiency meets sustainability with HPE GreenLake single pane of glass for your usage and costs

## HPE GreenLake Central



### Visibility

Provides detailed visibility into usage and costs with personalized dashboards and self-service reporting

### Control

Helps manage costs and usage via budgets, alerts, and customizable Insights

### Capacity Planning

Ensures you always have the capacity you need for your workloads

### Optimization

Delivers Insights to optimize usage and costs based on rules-based thresholds

03

# HPE GREENLAKE

Business and Operations Relevance  
Accelerating Value

# WHAT'S INCLUDED IN A "CLOUD EXPERIENCE"

## Preserve Cash

Avoid upfront cost of traditional purchase.

## Budget

Fixed unit price over the term of the contract, which decreases with the more capacity that you use.

## Reduce Cost

Better utilization of IT – Footprint; Licences; Support & Maintenance.

## Efficiency

Free up IT resources through aligned HPE Account Team, with industry leading proactive support & capacity management to reduce downtime.

## Quicker TTM

Respond to business demand in minutes, creating new cash flows quicker

# Enhanced Operating Model

Eliminating Inefficiencies experienced in traditional procurement

FROM

## TRADITIONAL MODE OF OPERATION

Long procurement cycle

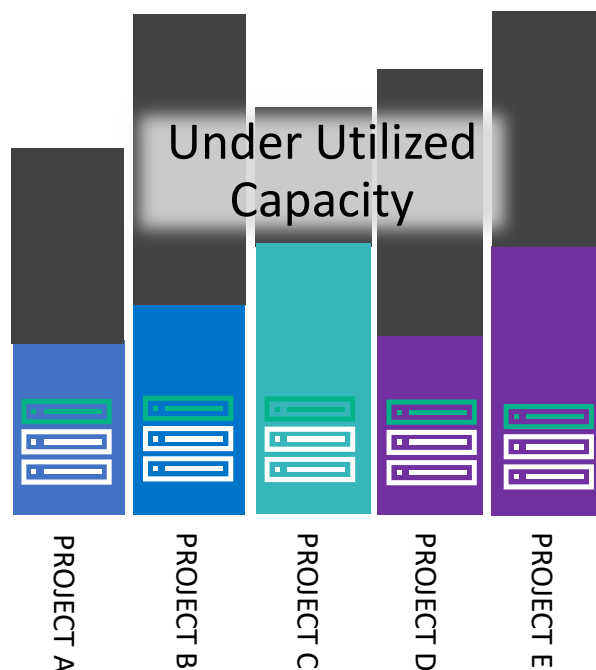
Opaque cost structure,  
slow

Slow, extended  
deployment

Designed via multiple  
Projects

Demand for multi-  
skilled Workforce

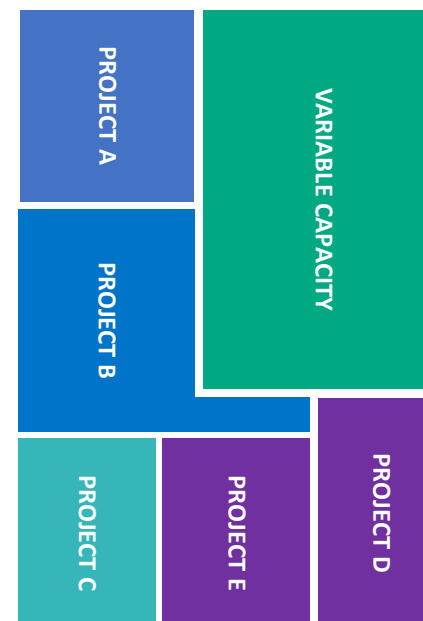
Over engineered &  
provisioned



TO

## CLOUD OPERATING MODEL

### HPE GREENLAKE



Consumption Model,  
Improved planning

Transparent cost model

Capacity ahead of  
demand

Simplified Procurement

Analytics

Agility



# NOVIPRO

Tailored, organizational solutions

Full range of personalized services  
for all your IT needs

We are your single point of contact  
Dedicated to your business!

## MANAGED SERVICES

- Equipment management
- 24/7/365 Support
- IT- Technology scanning
- Monitoring and proactive action
- On-Prem, Hybrid or Cloud
- New or Legacy infrastructure including
- Linux, IBM i, IBM z, IBM Aix and Windows

## MANAGED SERVICES - SECURITY

- Proofpoint Cybersecurity Awareness Program
- Proofpoint Email protection
- Tenable Vulnerability Assessment
- Arctic Wolf Managed Risk
- Keeper of Vault Security Password
- Fortinet Fabric

## SOC - AAS

- Arctic Wolf MDR
- Sentinel One EDR
- Carbon Black EDR

## INFRASTRUCTURE as a SERVICE — IaaS

- Guaranteed dedicated resources
- CPU / Memory / Disks
- SLA service level of 99.95%,
- Adaptability to needs

## BACKUP as a SERVICE — BaaS

- Backup management
- Fast and reliable recovery
- Increased security and warranty
- Implementation of restoration strategies
- Monitoring of current backups
- Architecture and strategic advice
- Creation of retention policies
- Personalized services

## COMPUTER RECOVERY (DRaaS)

- Protection against internal and external incidents
- Recovery times that meet customer requirements
- Support creating IT recovery plans
- Impact-free recovery plan testing

## SOFTWARE AS A SERVICE — SaaS

- Complete range of software in SaaS
- Office 365 / Messaging
- High level of security
- Simplified cost management

## INDIVIDUAL CONFIGURATION

- Tailored solutions for Midrange, Main frame, Cloud and EUS
- Cross-platform
- Extensive expertise

# HPE GREENLAKE SUCCESS STORIES



## Trinchero Family Estates

A wine empire built on  
inspiration and innovation



## Western Canada Lottery

Insights for enhanced  
gaming, stronger  
communities



## Asante

Building healthy  
communities with a private  
cloud



## Auckland Transport

Using advanced  
analytics to promote  
public safety

# Efficiency meets sustainability with HPE GreenLake

## Efficiency

**30%**

TCO savings<sup>1</sup>

**30%**

energy cost savings<sup>2</sup>

**85%**

of tech returned to HPE is  
upcycled and put back into  
active use<sup>3</sup>

Increase utilization with  
capacity planning

Eliminate  
overprovisioning,  
unused equipment

Optimize server  
refresh cycles

Lower energy  
consumption  
and footprint

Host your workloads in

## Sustainability

**50%**

of renewable electricity sourced in our  
operations on our way to 100% by 2030<sup>4</sup>

**6000+**

patents for transformational low-  
carbon technologies filed since 2000<sup>5</sup>

**>500**

Social and Environmental  
Responsibility audits conducted with  
suppliers<sup>6</sup>

<sup>1</sup> Forrester, Total Economic Impact of HPE GreenLake, May 2022

<sup>2</sup> Energy Cost Savings of HPE GreenLake versus Traditional CAPEX Purchase Methodology reference guide

<sup>3</sup> HPE Financial Services Technology Renewal Center information

<sup>4</sup> HPE Living Progress Report, 2021

<sup>5</sup> Based on HPE internal records

<sup>6</sup> 2021 Living Progress Data Summary, 2022

# THE HPE technology partner ECOSYSTEM

## Technology partners



## System integrator / Hosting



# Cloud services for your workloads

| AI, ML, & Analytics   | Business Applications  | Compute  | Containers  | Database  | Data Protection   |
|---|--|--|---|---|---|
| <ul style="list-style-type: none"> <li>• ML Ops</li> <li>• HPE Ezmeral Unified Analytics</li> <li>• AI and HPC infrastructure</li> <li>• Data fabric</li> <li>• Big data</li> <li>• Qumulo</li> <li>• Scality RING</li> </ul> | <ul style="list-style-type: none"> <li>• Payments (Lusis)</li> <li>• Electronic health records (Epic)</li> <li>• 5G core stack</li> <li>• Customer engagement (FIS Ethos)</li> </ul> | <ul style="list-style-type: none"> <li>• Compute Ops Management</li> <li>• Composable compute</li> <li>• General purpose compute</li> <li>• High availability compute</li> <li>• Storage optimized compute</li> </ul>                                | <ul style="list-style-type: none"> <li>• HPE Ezmeral Runtime Enterprise on VMs</li> <li>• Google Anthos</li> </ul>  | <ul style="list-style-type: none"> <li>• EDB Postgres</li> <li>• Microsoft SQL Server</li> <li>• Nutanix Era for Databases</li> <li>• SAP HANA</li> </ul>         | <ul style="list-style-type: none"> <li>• Backup &amp; recovery</li> <li>• Zerto</li> <li>• Disaster recovery</li> <li>• Backup infrastructure</li> <li>• Managed backup</li> <li>• Managed disaster recovery</li> <li>• Veeam</li> <li>• Commvault</li> <li>• Cohesity</li> </ul>             |
| Edge  | High Performance Computing   | Hybrid & Multicloud  | Hyperconverged  | Migration   | Networking  |
| <ul style="list-style-type: none"> <li>• Aruba</li> <li>• General purpose and Edge HCI</li> <li>• Ruggedized infrastructure</li> </ul>  | <ul style="list-style-type: none"> <li>• HPC</li> <li>• AI and HPC infrastructure</li> </ul>   | <ul style="list-style-type: none"> <li>• HCI hybrid cloud VMs</li> <li>• Managed services for cloud</li> <li>• Microsoft Azure Stack Hub</li> <li>• VMware Cloud Foundation</li> <li>• Google Anthos</li> <li>• Microsoft Azure Stack HCI</li> </ul> | <ul style="list-style-type: none"> <li>• HCI hybrid cloud VMs</li> <li>• Disaggregated HCI</li> <li>• General purpose and Edge HCI</li> <li>• Hyperconverged VM infrastructure</li> <li>• Nutanix HCI</li> <li>• Microsoft Azure Stack HCI</li> </ul>                     | <ul style="list-style-type: none"> <li>• Application migration</li> <li>• Data migration</li> <li>• Mainframe migration</li> <li>• Financial migration</li> </ul> | <ul style="list-style-type: none"> <li>• Indoor wireless</li> <li>• Outdoor wireless</li> <li>• Remote wireless</li> <li>• Wired access</li> <li>• Wired aggregation</li> <li>• Wired core</li> <li>• SD branch</li> <li>• UXI</li> <li>• EdgeConnect</li> <li>• HPE Aruba Central</li> </ul> |
| Private Cloud   | SAP  | Storage  | Security, Risk, & Compliance  | Virtual Desktop   | Virtualization  |
| <ul style="list-style-type: none"> <li>• Private Cloud Enterprise (bare metal, VMs, containers, storage)</li> </ul>   | <ul style="list-style-type: none"> <li>• SAP HANA</li> <li>• SAP S/4HANA Cloud, Private Edition</li> </ul>   | <ul style="list-style-type: none"> <li>• Block storage</li> <li>• File storage</li> <li>• Object storage</li> <li>• Data fabric</li> <li>• Backup and recovery</li> </ul>  | <ul style="list-style-type: none"> <li>• Continuous compliance</li> <li>• Managed backup</li> <li>• Managed disaster recovery</li> <li>• Managed security</li> <li>• Zerto</li> <li>• Continuous cost control</li> <li>• Software license and asset management</li> </ul> | <ul style="list-style-type: none"> <li>• Virtual desktop infrastructure</li> </ul>  | <ul style="list-style-type: none"> <li>• HCI hybrid cloud VMs</li> <li>• Virtual machines</li> <li>• General purpose VM infrastructure</li> <li>• Hyperconverged VM infrastructure</li> </ul>   |

## HPE GREENLAKE MOMENTUM

**\$10B**

TCV booked

**65,000**

customers

**900+**

partners

**12+**years of IT as-a-service  
on-premises**96%**customer  
retention rate**1+ Exabyte**

data under management

**80%**of largest customers  
using HPE GreenLake**2M**connected  
devices**600** data centers in **30** countries  
HPE colo partners

Total Contract Value (TCV) represents the total value of one-time and recurring revenue for the period defined by the contract.

# WHY NOVIPRO



Bilingual Expertise



Proven infrastructure expertise and project success



Ecosystem of select Business Partners



Self funding services yielding meaningful ROI



Expertise fulfilling and managing day-to-day client IT Operations & tasks



Increased security & control



Improved productivity through rapid problem resolution



Existing IT resources freed up to pursue other business projects



**THANK YOU!**

